

FLANGE TYPE THERMOWELLS

Technical Data

Welded type: WSF, WLF

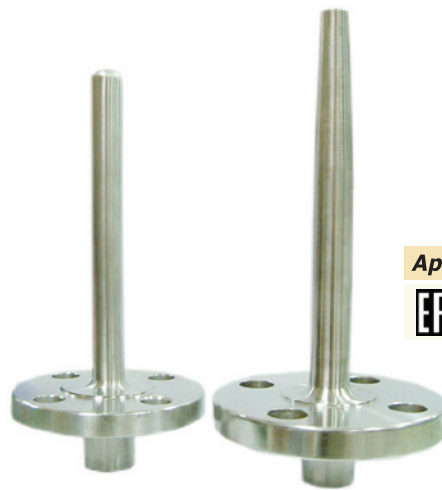
Drilled bar stock type: BSF, BLF, BTF, BTLF, BPSF, BPLF

Material: SS304, SS316, SS316L, Monel, Hastelloy C 276, Brass, Carbon Steel, Titanium (special material available upon request)

Process connection: 1/2" ~ 4" flange available, flange rating— ANSI, DIN, JIS available (special flange upon request)

Instrument connection: 1/2"NPT, 3/4" NPT Female available (special thread upon request)

Approvals:

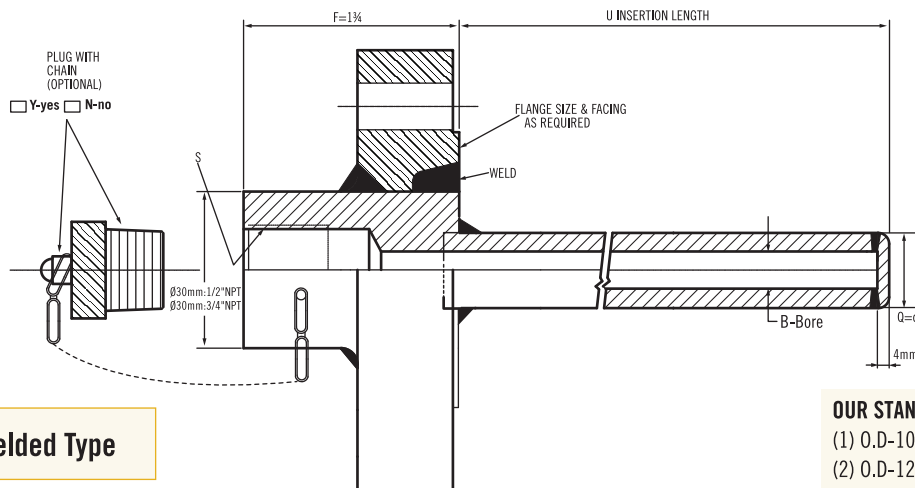


Flange Wells Series

* F: Length is suitable for flange size 3/4", 1", 1 1/2", 2", and flange rating 150# & 300#.

Other size and rating (F) length is by makers standard.

Model : WSF(Welded Standard Flange Type)



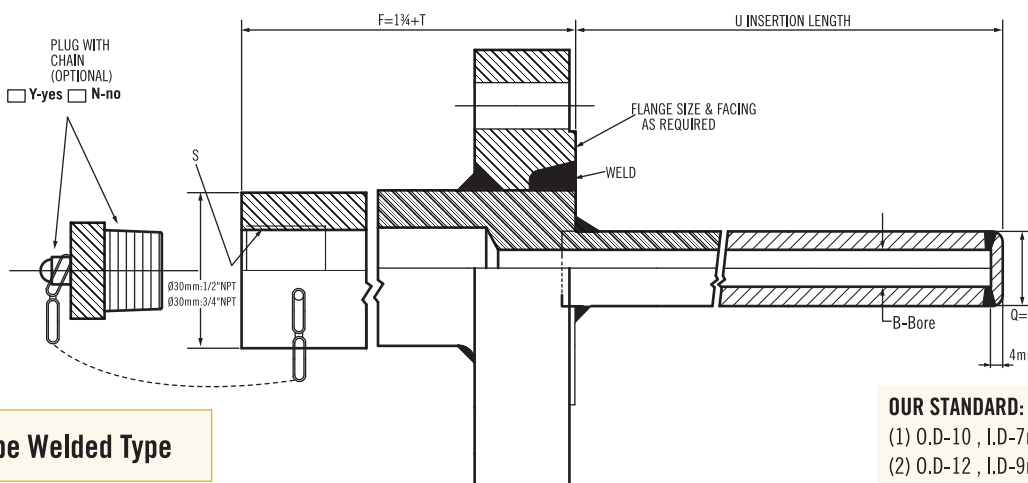
Tube Welded Type

OUR STANDARD:

- (1) O.D-10 , I.D-7mm
- (2) O.D-12 , I.D-9mm
- (3) O.D-14 , I.D-10mm

No custom request for this type!

Model : WLF(Welded Lag Flange Type)



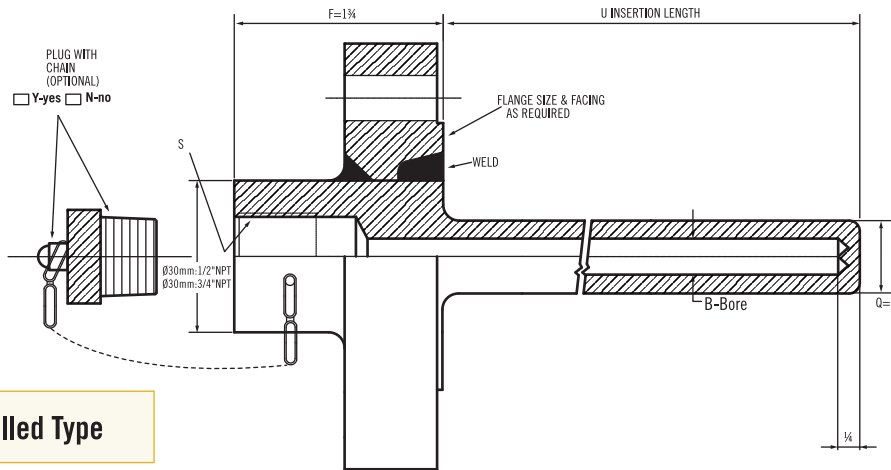
Tube Welded Type

OUR STANDARD:

- (1) O.D-10 , I.D-7mm
- (2) O.D-12 , I.D-9mm
- (3) O.D-14 , I.D-10mm

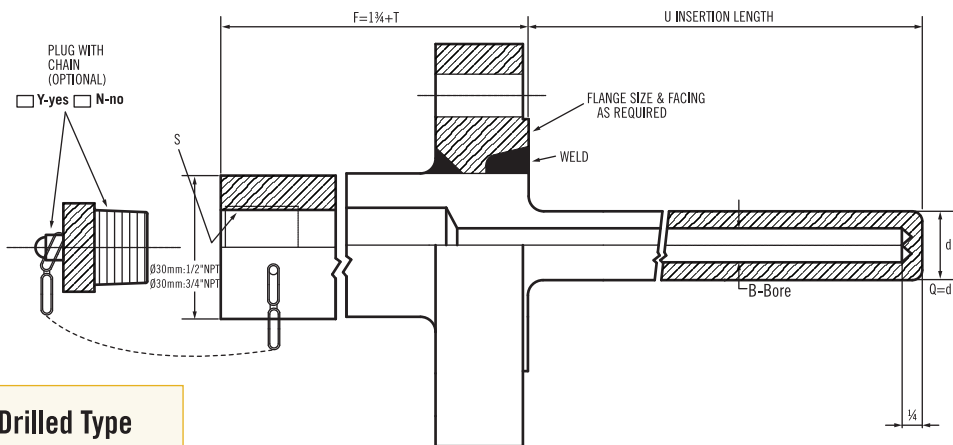
No custom request for this type!

Model : BSF(Straight Standard Flange Type)



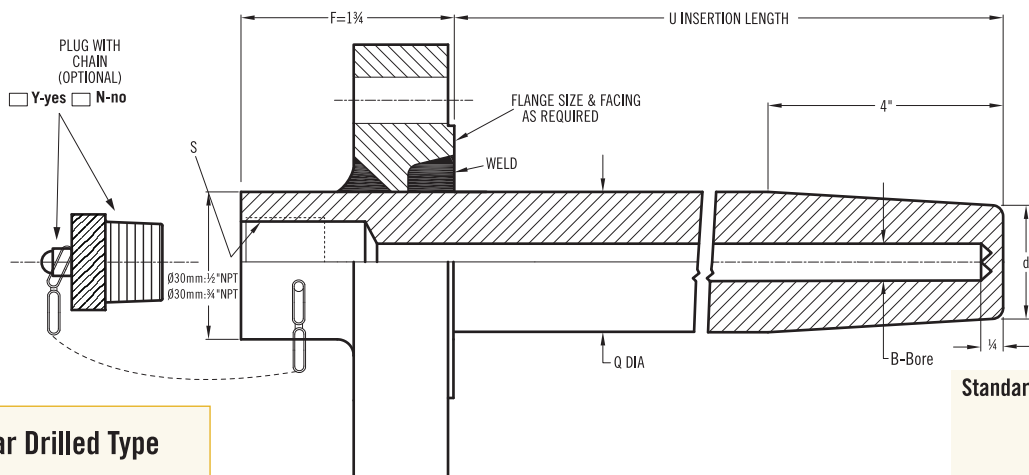
Bar Drilled Type

Model : BLF(Straight Lag Extension Flange Type)



Bar Drilled Type

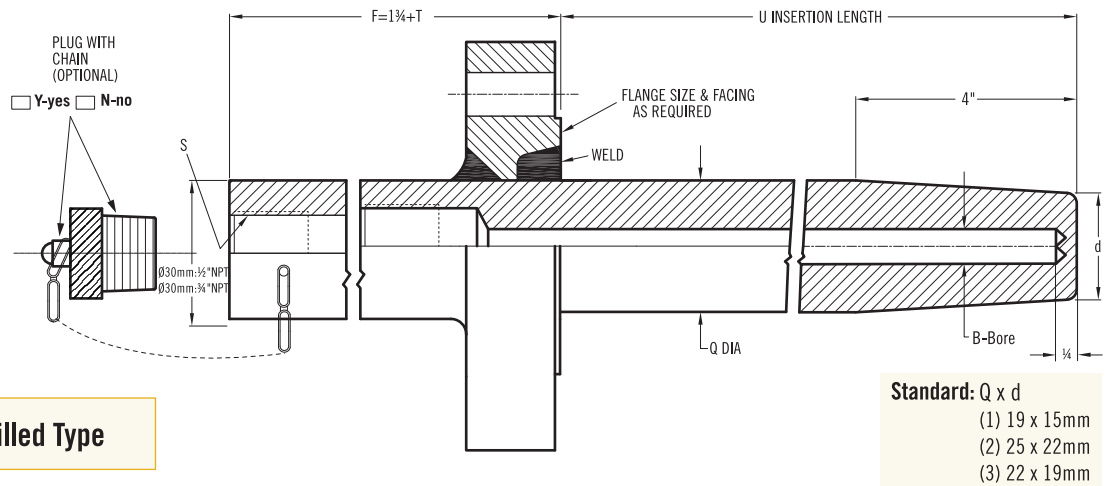
Model : BTF(Tapered Standard Flange Type)



Bar Drilled Type

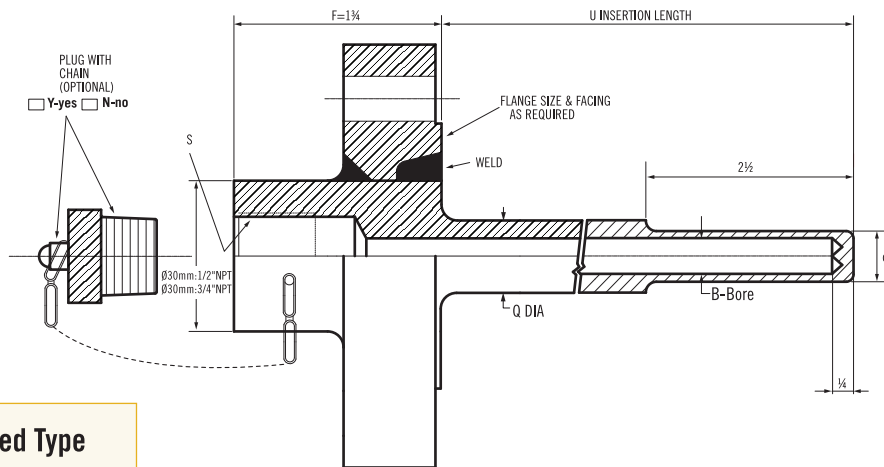
Standard: Q x d
 (1) 19 x 15mm
 (2) 25 x 22mm
 (3) 22 x 19mm

Model : BTLF(Tapered Lag Extension Flange Type)



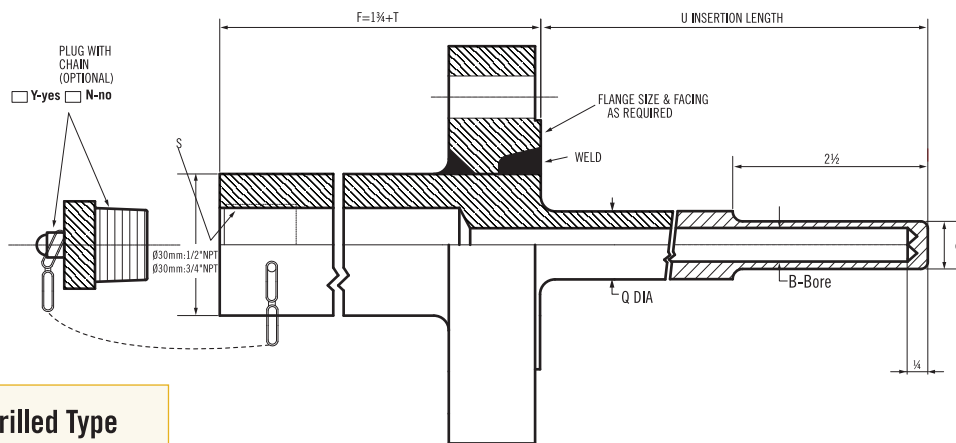
Bar Drilled Type

Model : BPSF(Stepped Standard Flange Type)



Bar Drilled Type

Model : BPLF(Stepped Lag Extension Flange Type)



Bar Drilled Type

Ordering Information

Model	Configuration Style																	
	WSF	WLF	BSF	BLF	BTF	BTLF	BPSF	BPLF										
<div style="display: flex; justify-content: space-between; width: 100%;"> <div style="width: 15%; text-align: center;">↓</div> <div style="width: 15%; text-align: center;">↓</div> <div style="width: 15%; text-align: center;">↓</div> <div style="width: 15%; text-align: center;">↓</div> <div style="width: 15%; text-align: center;">↓</div> <div style="width: 15%; text-align: center;">↓</div> <div style="width: 15%; text-align: center;">↓</div> <div style="width: 15%; text-align: center;">↓</div> <div style="width: 15%; text-align: center;">↓</div> <div style="width: 15%; text-align: center;">↓</div> <div style="width: 15%; text-align: center;">↓</div> <div style="width: 15%; text-align: center;">↓</div> <div style="width: 15%; text-align: center;">↓</div> <div style="width: 15%; text-align: center;">↓</div> <div style="width: 15%; text-align: center;">↓</div> </div>	Code Material																	
	CS	Carbon Steel		MO	Monel													
	S1	304 Stainless Steel		HC	Hastelloy C276													
	S2	316 Stainless Steel		Ti	Titanium													
	S3	316L Stainless Steel		OP	Option (please indicate material)													
	Code		Process Flange Size															
			(1) ½" (2) ¾" (3) 1" (4) 1½" (5) 2" (6) 2½" (7) 3" (8) 4" (9) option (please indicate size)															
	Code		Flange Rating															
	A	150#	E	1500#	I	PN25	M	JIS20K										
	B	300#	F	2500#	J	PN40	O	option										
	C	600#	G	PN10	K	JIS5K												
	D	900#	H	PN16	L	JIS10K												
	Code		S-Instrument Connection															
			(A) ½"NPT Female (B) ¾"NPT Female (O) option															
	Code		Lag Length "T"															
No	0	T6	6"															
T3	3"	Tn	option (please indicate length)															
Code		"Q" Diameter (mm)																
		Please directly fill in the required diameter.																
Code		"d" Diameter (mm)																
		Please directly fill in the required diameter.																
Code		"B" BORE diameter																
		(1) Ø6 (2) Ø7 (3) Ø8 (4) Ø9 (5) Ø10 (O) option																
Code		"U" Insertion Length																
		Fill in the requested length: e.g. 300mm=300u																
Code		Plug with Chain																
Y	Yes																	
N	No																	
<table border="1" style="width: 100%; height: 20px;"> <tr> <td style="width: 15%;"></td> <td style="width: 15%;"></td> <td style="width: 15%;"></td> <td style="width: 15%;"></td> <td style="width: 15%;"></td> <td style="width: 15%;"></td> <td style="width: 15%;"></td> <td style="width: 15%;"></td> <td style="width: 15%;"></td> </tr> </table>																		Complete Ordering Code