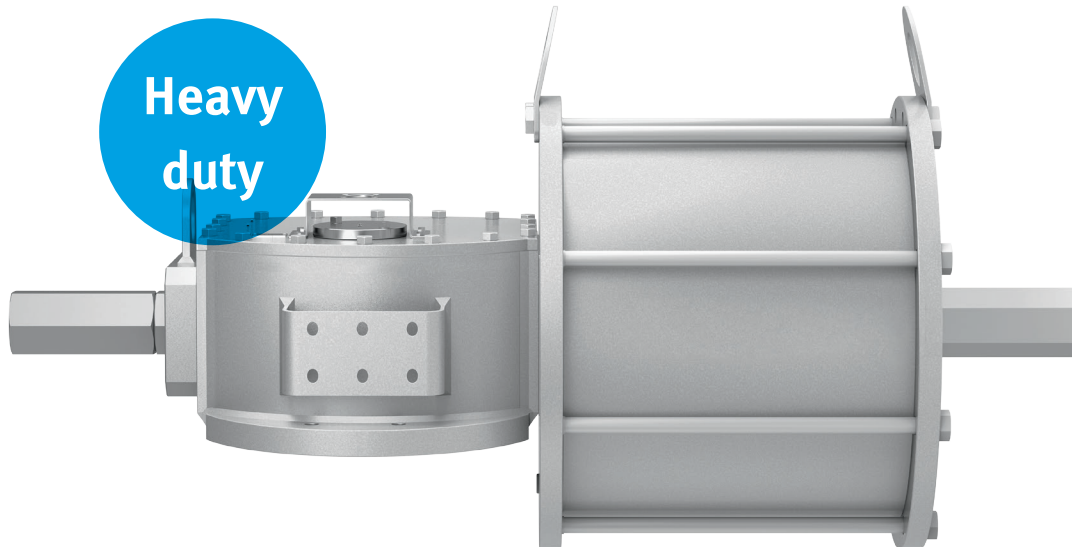


Quarter turn actuator DFPD-HD

FESTO



Powerful performer!

Highlights

- Highly modular for a variety of applications
- SIL3-certified
- Long product service life
- Interfaces to VDI/VDE 3845 NAMUR and ISO 5211

DFPD-HD is the latest addition to the quarter turn actuator range DFPD. With torque up to 32,000 Nm, the Scotch yoke actuator is ideal for on/off and closed-loop control of ball valves, air dampers and butterfly valves in power plants, the chemical industry and in water treatment applications. It is the perfect choice whenever safe, reliable solutions are required.

Highly modular system

With a multitude of possible combinations, DFPD-HD provides the perfect solution for every requirement. The options include three different gear unit sizes, single-acting or double-acting versions, configurable spring forces, a choice between right or left direction of rotation and mechanical or hydraulic manual override.

Adaptable spring forces

For the single-acting version, the optimum torque can be defined for both opening and closing.

Safety guaranteed – up to SIL3

The DFPD-HD is SIL3-certified. The mechanical or hydraulic manual override provides additional safety along with the fail-close or fail-open functions.

A tough performer

The strong bronze bushings and the coating of the DFPD-HD ensure a long service life, even in harsh, corrosive environments.

Quarter turn actuator DFPD-HD

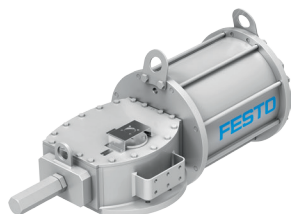
Main functions

The DFPD-HD is suitable for controlling and regulating ball valves, air dampers and butterfly valves. Its VDI/VDE 3845-compliant interface enables direct mounting of sensor boxes or positioners.

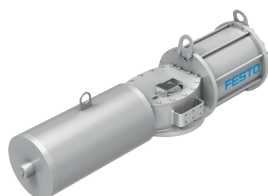
The main applications of the DFPD-HD are:

- Controlling heating in different power station processes
- Controlling gas ventilation flaps
- Controlling compressed air flaps on furnaces
- Treatment of drinking water, industrial water and wastewater
- Controlling flaps in chemical processes

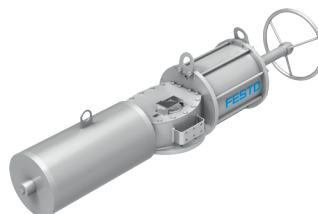
The variants



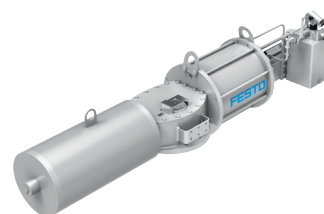
Double-acting



Single-acting



Single-acting with mechanical manual override



Single-acting with hydraulic manual override

Technical data

Design	Scotch yoke	
Mode of operation	Double-acting or single-acting	
Torque	Up to max. 32000 Nm	
Size	9000, 18000, 32000	
Swivel angle	90°	
End position adjustment range	0°	-5° ...+5°
	90°	
Connection to process valve as per standard	ISO 5211	
Connection for attaching solenoid valves conforms to standard	VDI/VDE 3845 (NAMUR)	
Operating pressure	3 ... 8.5 bar	
Operating temperature	-20 ... 80 °C	
Cap material	Carbon steel	
Piston material	Carbon steel	
Housing material	Carbon steel	
Screw material	Steel alloy	
Type of ignition protection for gas	II 2G	
Type of ignition protection for dust	II 2D	
Explosion-proof ambient temperature	-20 °C ≤ Ta ≤ +60 °C	
Safety Integrity Level (SIL)	Up to SIL3 Low Demand mode to IEC 61508	
CE marking	According EU Explosion Protection Directive (ATEX)	