

# Ball valve drive unit VZPR

**FESTO**



## Two in one!

### Now fully integrated in the system: Two bestsellers unite!

Customer favourites for years, and now combined as one – the VAPB ball valve series and the DAPS quarter-turn actuator series are now available as an integrated system: VZPR. Featuring adapted torque and direct assembly, the system represents an unbeatable package bringing with it clear cost benefits.

### Plug and process ...

... making configuration calculations for drive and ball valves a thing of the past. Just order the right pre-sized unit and assemble it in the system!

### Expanded horizon ...

... with the 2 1/2" variants.

### Brass and stainless steel ...

... can be selected for all ball valve drive units.

### Adapted torque ...

... for reliable opening and closing, including unsurpassed flexibility: a range of drive sizes is available where different diameters are required, thus avoiding problems with over-sizing.



Two-in-one!



Pre-sized



Value for money

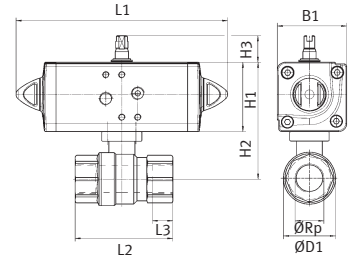
910.4.PSI →

Product Short Information

# Ball valve drive unit VZPR

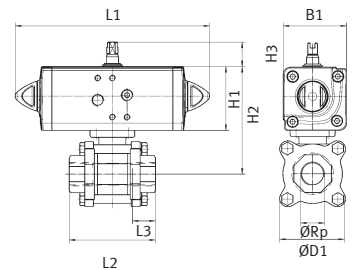
## Dimensions, brass

Type	B1	ØD1 max	ØRp	H1	H2	H3	L1	L2	L3
VZPR-BPD-22-R14	52.2	35	Rp1/4"	52.2	92.2	20	159	75	15
VZPR-BPD-22-R38	52.2	35	Rp3/8"	52.2	92.2	20	159	75	15
VZPR-BPD-22-R12	52.2	35	Rp1/2"	52.2	92.2	20	159	75	15
VZPR-BPD-22-R34	59.2	45	Rp3/4"	59.2	104.2	20	174	80	16
VZPR-BPD-22-R1	59.2	55	Rp1"	59.2	104.2	20	174	90	19
VZPR-BPD-22-R114	70.4	65	Rp1 1/4"	70.4	130.2	20	198	110	21
VZPR-BPD-22-R112	70.4	75	Rp1 1/2"	70.4	135.4	20	198	120	21
VZPR-BPD-22-R2	83.3	90	Rp2"	83.3	158.3	20	236.5	140	25
VZPR-BPD-22-R212	107.5	110	Rp2 1/2"	107.5	192.5	30	189.9	143	24



## Dimensions, stainless steel

Type	B1	B2 max	ØRp	H1	H2	H3	L1	L2	L3
VZPR-BPD-22-R14R	59.2	50	Rp1/4"	59.2	104.2	20	174	60	14
VZPR-BPD-22-R38R	59.2	50	Rp3/8"	59.2	104.2	20	174	60	14
VZPR-BPD-22-R12R	59.2	50	Rp1/2"	59.2	104.2	20	174	75	20
VZPR-BPD-22-R34R	59.2	50	Rp3/4"	59.2	104.2	20	174	80	19
VZPR-BPDH-22-R34R	70.4	50	Rp3/4"	70.4	115.4	20	198	80	19
VZPR-BPD-22-R1R	70.4	50	Rp1"	70.4	125.4	20	198	90	21
VZPR-BPD-22-R114R	70.4	50	Rp1 1/4"	70.4	130.4	20	198	110	23
VZPR-BPDH-22-R114R	83.3	75	Rp1 1/4"	83.3	130.4	20	236.5	110	23
VZPR-BPD-22-R112R	83.3	85	Rp1 1/2"	83.3	130.4	20	236.5	120	25
VZPR-BPDH-22-R112R	107.5	85	Rp1 1/2"	107.5	130.4	30	289.9	120	25
VZPR-BPD-22-R2R	107.5	100	Rp2"	107.5	130.4	30	289.9	140	28
VZPR-BPD-22-R212R	111.1	170	Rp2 1/2"	111.1	211.1	30	313.6	185	38



## Technical Data

Function	2-way ball valve: 2 parts brass, 3 parts if stainless steel with double-acting quarter-turn actuator (lever/swivel principle)
Mounting position	Any
Medium	For drive: compressed air For ball valve: compressed air, water and neutral media
Corrosion resistance classification	Drive: CRC3 Brass ball valve: CRC1 Stainless steel ball valve: CRC3
Drive operating pressure	1 ... 8.4 bar
Ball valve pressure level	Brass 1/4" ... 1 1/4": PN 40 bar Brass 1 1/2" ... 2 1/2": PN 25 bar Stainless steel 1/4" ... 2 1/2": PN 63 bar
Permissible storage temperature	-20°C ... +150°C depending on operating pressure
Air connection for solenoid valve	As per Namur (VDI/VDE 3845)

## Festo AG & Co. KG

Ruiter Straße 82  
73734 Esslingen  
Internet [www.festo.de](http://www.festo.de)  
Telefon +49 (0) 180/303 11 11  
Telefax +49 (0) 7 11/347-20 71  
E-mail [infoservice@festo.com](mailto:infoservice@festo.com)

Subject to change

200405