

Sensor box SRBG

FESTO



Space-saving dual sensor

Highlights

- Inductive dual sensor
- Direct mounting on quarter turn actuators
- Compact and sturdy
- M12 plug connector or terminal rail connection
- PNP, NAMUR, 2-wire DC, AS-Interface switching outputs
- cULus Listed, General Purpose
- Intrinsically safe versions to ATEX and SIL 2 to IEC 61508

The new sensor box SRBG is a compact and cost-effective solution when it comes to optical position indication and electrical position of automated or manually actuated process valves. They can be easily and directly mounted without accessories, and require minimal space.

Fast and simple mounting and commissioning

Direct mounting on quarter turn actuators with a mounting interface to VDI/VDE 3845 does away with the need for adjustment – thanks to fixed mounting holes in the sensor housing. Two actuating element sizes are sufficient for position sensing, regardless of the size of the actuator and its direction of rotation.

Very flexible: suitable for many mounting situations

Wide range of electrical connection options thanks to a choice of versions with M12 plug connector or terminal compartment. SRBG-...-M12 offers a space-saving and compact sensor connection via an M12 plug connector. SRBG-...-C2 offers a terminal compartment for

sensor and solenoid valve connections. This reduces the installation effort required and the wiring costs, since the a solenoid valve can be powered directly via the sensor connection.

A further plus: in addition to various PNP, NAMUR and 2-wire DC switching outputs, versions with AS-Interface for easy and cost-effective networking of sensors and solenoid valves are also available.

Reliable operation

Thanks to clear LED indication for the switching status, supply voltage and solenoid valve output. The intrinsically safe variants are certified to ATEX for zone 1 and SIL 2.

Sensor box SRBG



SRBG- ... -M12

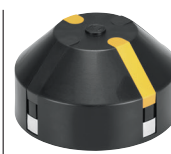


SRBG- ... -C2

General characteristics		
Measuring principle	Inductive dual sensor	
Mounting	Direct mounting on quarter turn actuators with interface to VDI/VDE 3845	
Electrical connection	M12 plug connector	Terminal compartment
Solenoid valve connection	M12 socket (AS-Interface version)	Terminal compartment
Switching outputs	PNP NAMUR 2-wire DC AS-Interface	PNP NAMUR 2-wire DC
Operating and environmental conditions		
Housing protection class	IP67	
ATEX ignition protection type	II 1G Ex ia IIC T6 (NAMUR version)	
Safety Integrity Level [SIL] to IEC 61508	Up to SIL 2 (NAMUR version)	
Approval	cULus Listed, General Purpose	
Ambient temperature [°C]	-25 ... +70 -25 ... +100 (NAMUR version)	
Information on materials		
Housing	PBT	
Screws	Stainless steel	



SASF-S2-B-F-A34



SASF-S2-B-F-A56

General characteristics		
Activating elements	4 activating elements fixed at an offset of 90° for actuators with anticlockwise and clockwise rotation	
Mounting hole pattern [mm]	80x30	30x130
Shaft height [mm]	20 and 30	30 and 50
Operating and environmental conditions		
ATEX	II 1G	
Ambient temperature [°C]	-25 ... +70	
Information on materials		
Housing	PA	
Actuating lug	Stainless steel	
Screws	Stainless steel	